

MEND

Hunger Relief Network

Together, we feed our community.

2022 Impact Report





Dear MEND Supporter,

Hikers use the term "cresting the hill" when they reach the end of a climb and can see what's on the other side. 2022 was the start of that moment: an opportunity to push our programming and impact to new heights, and to pause and reflect on all that you made possible over the last two years.

Despite ongoing and considerable challenges, your support allowed MEND to stay true to its mission of strengthening the health of our community by increasing access to fresh and healthy food.

Your unwavering generosity made this possible!

When regular sources for donated food couldn't keep up with the increased demand, you allowed us to purchase needed food. When long-standing farm partners suffered lower crop yields due to the drought, you allowed us to forge partnerships with new local and regional growers. When the health crisis and other burdens prevented people from accessing food pantries, you allowed us to expand the MEND on the Move program, and reach more people where they are, through mobile markets and home deliveries.

Again and again, because of your commitment, MEND was able to act strategically and find solutions that furthered our vision of a hunger relief system that is culturally responsive, respectful of the individual, and one which advances health equity by bringing fresh and nutritious food directly and consistently to those who need it most.

Thanks to you, MEND is now ready for the next summit! We are confident that, with your continued support, we can work together to transform hunger relief. Let's keep climbing!

In gratitude,

Robin S. Peacock

MEND Board of Trustees

- *A. Jabbar Abdi, Chair*
- *Karen Hartshorn Hilton, Vice Chair*
- *Katherine S. Cahill, Treasurer*
- *Claire Sinclair, Secretary*
- *Darlyn Blaney*
- *Chesney Blue*
- *Chris Costanzo*
- *Magaly Denis-Roman*
- *Benjamin Eyler*
- *Sister Linda Klaiss*
- *Dyanna Moon*
- *Chigozie Onyema*
- *Margaret Santana*
- *Samir Shah*
- *Sunita Subramanian*
- *Rick Wessler*

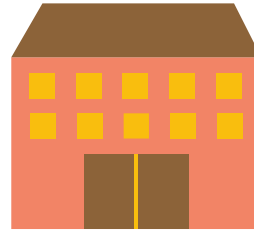
MEND Staff

- *Programming:*
 - *Keily Hayes, Director of Community Impact*
 - *Talia Smith, Program Coordinator*
 - *Lloyd Carnegie, Program Coordinator*
- *Operations:*
 - *Alicia Harrison, Director of Operations*
 - *Cameron Johnson, Operations Manager*
 - *Donnell Randleman, Driver/Hub Asst.*
 - *Fausto Paredes, Driver/Hub Asst.*
 - *Emily Force, Admin. Asst.*
- *Lisa Duggan, Development and Communications Manager*
- *Robin Peacock, Executive Director*

Your Support Made a Difference!

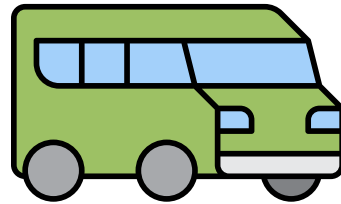


In 2022, you increased fresh food access for **390,000+ people** across Essex County...



...through partnerships with **23 food pantries** and **18 community partners!**

You provided fresh & healthy food through **69 mobile markets** and **3,125 home deliveries...**



...and over **1,500 hours** of volunteer assistance!



"We are an urban district preschool with 120 families, of whom 100% of our students receive free lunch. Many of our families have a lot of people living in their homes, and live paycheck to paycheck. The MEND Farmer's Markets have been a wonderful addition to our program and the families so look forward to it each month! They are so happy to have fresh fruits & vegetables to feed their families when it would otherwise not be affordable to them."

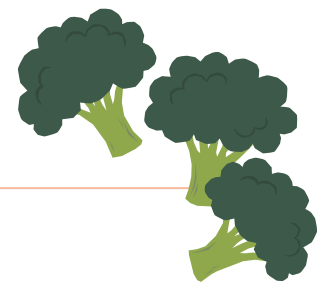
-Orange Early Childhood Center

Platinum
Transparency
2023

Candid.

PO Box 1304, Maplewood NJ 07040
EIN: 27-1105051
info@mendnj.org
www.mendnj.org
862.250.5216

2022 By the Numbers



Support & Revenue

Consistent with trends established in 2020-21, MEND's greatest source of support continues to come from **individual donors** who contributed **61% of the total revenue** in 2022 (Individuals + Events).

Community Orgs	\$ 62,678
Corporate Support	\$114,158
Events	\$254,912
Individual Support	\$431,415
Grants	\$324,405
Cash Subtotal:	\$1,187,568
Donated Food	\$700,048
Total Revenue:	\$1,887,616

Expenditures

The majority of MEND's expenses (86%) are programming-related: staffing for the Pantry Partnerships and MEND on the Move programs, supplemental nutritious food purchases to round out the donated food supply, and infrastructure costs related to the Sweet Pea van and Fresh Food Hub - to keep both programs going strong!

Fundraising	\$ 113,027
Programs	\$831,978
Mgmt & Operations	\$127,392
Cash Subtotal:	\$1,072,397
Donated Food	\$700,048
Total Expenses	\$1,772,445

**Totals represent pre-audit numbers*



\$700,048 = value of donated food
74% of which is fresh!

\$409,000 = cost of food purchased
*91% of which is fresh, and
50% of which is local!*

Thank You for Your Support!

Visit www.mendnj.org/donors to see our full list of donors.